



# Capability Statement



[hadrongroup.com.au](http://hadrongroup.com.au)  
Strategy & implementation | Data solutions | Economics

# Our people



**Edward Chan**  
Partner



**Ben Wood**  
Partner



**Amanda Fairley**  
Executive Director



**Malinda Parkinson**  
Director



**Rachael Logie**  
Director



**Genevieve Bailey**  
Director



**Liam Walsh**  
Director



**Annie Townley**  
Director



**Rob Busch**  
Director



**Sam Mazzer**  
Associate Director



**Beau Seymour**  
Associate Director



**Kevin Xu**  
Manager



**Maximiliano Micheli**  
Senior Consultant



**Carl Hooks**  
Senior Consultant



**Evelyn Wu**  
Senior Consultant



**Juliet Tatad**  
Consultant



**Charlotte Chaplin**  
Business Manager



# About us

**Hadron Group takes a new approach to consulting and advisory services.**

Our team is passionate about creating a better quality of life in our cities and regions.

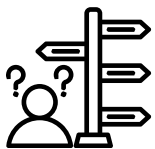
With an emphasis on innovation and collaboration, we partner with our clients to deliver high-quality outcomes with a positive and lasting impact.

We provide comprehensive investment advice with expertise in strategy, economics, sustainability, digital transformation and data.

We bring strong technical knowledge and hands-on experience to find simple and effective solutions for our clients and support them through implementation.

Our core values of collaboration, embracing challenges, and impacting positively, are embedded in every project we do.

## Helping clients navigate challenges



### Complex decisions

Implement robust decision-making frameworks

Design effective governance and assurance processes

Create an evidence-base, automate its collection, and communicate easy to understand insights



### Ensuring real benefits

Develop an accurate understanding of the baseline, or current state

Quantify benefits, drawing on benchmarks and industry standards, and embed targets and measures in the project early

Clear reporting, highlighting emerging risks and issues



### Realising change

Root cause analysis and stakeholder engagement to understand underlying issues and identify opportunities

Process automation to reduce likelihood of errors and time taken

Develop tools, guidance, and training, to support changes long-term

# Our Clients



Australian Government  
Infrastructure Australia



Regional  
NSW



Western Parkland City  
Authority



Australian Government  
Department of Agriculture,  
Water and the Environment



Health  
Infrastructure



PARKES SHIRE COUNCIL



Treasury



Investment  
NSW



MIDCOAST  
council



GEORGES  
RIVER  
COUNCIL



Transport  
for NSW



Planning and  
Environment



Aboriginal  
Housing  
Office



VICTORIA  
State  
Government

Department  
of Transport



Education



Land & Housing  
Corporation



Education  
School Infrastructure



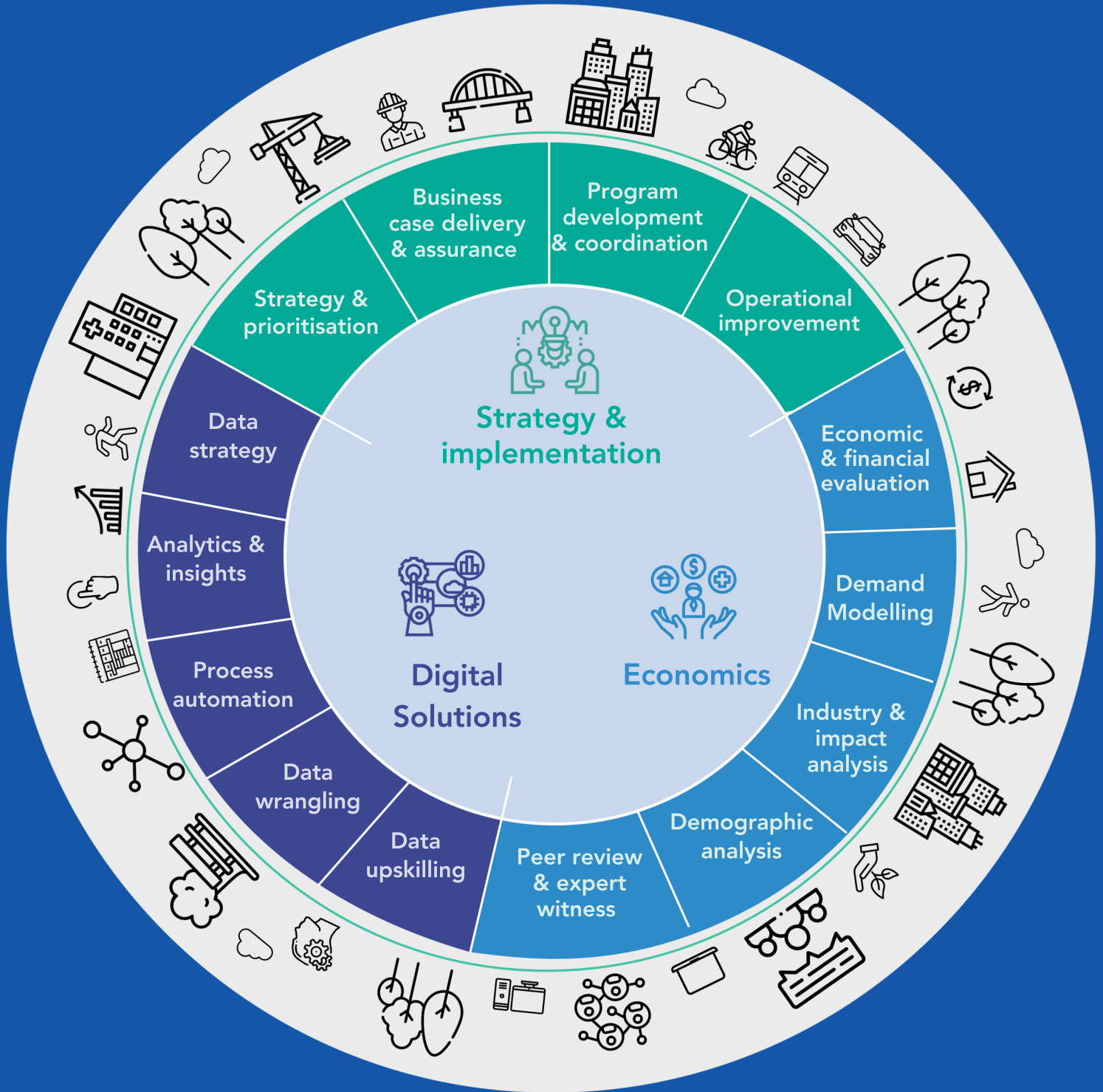
Infrastructure  
Western Australia

Infrastructure NSW



# Our core capabilities

We work across all sectors to provide better places for our communities, including transport, health, housing, and education.



# Strategy & Implementation



Our Strategy & Implementation team bring an in-depth understanding of infrastructure, digital transformation and project development and delivery.

This unique combination of skills allows us to bridge a range of complementary but often separate disciplines and provide effective, meaningful guidance to clients across all phases of the infrastructure lifecycle to implement lasting change.



HADRON  
GROUP

# Strategy & Implementation

## Our experience



### State Infrastructure Strategy of NSW Project Support

Hadron Group provided program management and content support for the latest State Infrastructure Strategy (SIS) of NSW, working alongside Infrastructure NSW teams. Hadron Group provided strategic advice on content, stakeholder consultation, input, and overall program approach to undertake and complete the SIS.



Business case delivery & assurance

Program development & coordination

### New Zealand Infrastructure Assessment Framework

Hadron Group developed an Assessment Framework for Te Waihangā's (the New Zealand Infrastructure Commission) Infrastructure Priority List in partnership with Sense Partners. Hadron Group leveraged its deep experience with I-Bodies and assurance processes to provide advice on stages, processes and methodologies for the Assessment Framework, including key risks and opportunities for Te Waihangā.



Strategy & prioritisation

### Infrastructure WA Prioritisation Framework

Infrastructure WA is the state's independent infrastructure advisor and Hadron Group were engaged to develop a prioritisation framework to strengthen, streamline and align how it prioritises infrastructure needs across its strategies, plans and assessments. Hadron Group developed the Prioritisation Framework, supported consultation with other WA Government agencies and undertook piloting on the framework. The framework includes an Outcomes Framework for monitoring, bespoke modules for different Infrastructure WA functions and a suite of templates and guides.



Strategy & prioritisation

Program development & coordination

### AI in NSW Planning

The project aimed to streamline the development application process for councils through the use of Artificial Intelligence and digital solutions by establishing a panel of products and the launch of a grant program. Our work included developing the project strategy, stakeholder collaboration across local and state government and with industry peak bodies, workshop facilitation, procurement strategy and materials development for the panel, grant strategy and materials development, procurement and grant evaluation, facilitation of contracting framework training for councils, and presenting at industry briefings.



Business case delivery & assurance

Program development & coordination

### Fast Rail Program Framework & Regional Development Framework

We developed the Fast Rail Program Framework, which guides program-level planning, prioritisation and decision making and ensures alignment and consistency across the four Fast Rail corridors. We subsequently created the Fast Rail Regional Development Framework, which guides the identification of broader regional development opportunities that could be implemented alongside the delivery and operation of fast rail to maximise the opportunities for regional communities along the Fast Rail Corridors.



Strategy & prioritisation

Program development & coordination

# Strategy & Implementation

## Our experience



### Business Case

Hadron Group has project managed and developed the final business case for the NSW Government's largest ever investment in social housing, with \$4 billion committed to deliver 5,400 new social homes. Working closely with teams across Homes NSW and other technical advisors, Hadron Group delivered a robust final business case and coordinated the Infrastructure NSW Gateway 2 assurance process. The business case has focused on the delivery strategy and how Homes NSW can leverage partnerships with the housing and developer industries to maximise program outcomes.



Strategy & prioritisation

### 100 Early Learning Preschools

The 100 Public Preschools Program is the NSW Government's flagship investment in early childhood education. The NSW Department of Education engaged Hadron Group to conduct a cost-benefit analysis (CBA) for the 100 Public Preschools Program, a \$769 million election commitment to double the number of government-run preschools in NSW. Hadron Group worked closely with the Department of Education to develop a robust economic framework and quantify the costs and benefits to the children, parents, carers and the NSW Government.



Strategy & prioritisation

### Bradfield City Centre Business Cases

We played a key role in the development of six business cases for the Bradfield City Centre. Our role included procuring and securing internal and external resources, establishing and managing governance arrangements, developing a team rhythm to ensure successful delivery, and managing and reviewing business case inputs and outputs.



Business case delivery & assurance

Program development & coordination

### Future Transport 2056 Strategy Refresh

We delivered the refresh of the Future Transport 2056 Strategy to reflect changes to the transport operating environment since 2018. In collaboration with over 160 internal stakeholders, we provided program management, stakeholder engagement, and support services for TfNSW and also managed the narratives for Future Transport 2056. We were also responsible for rapidly collecting updates and reporting on the progress of over 300 initiatives in the Services and Infrastructure Plans.



Strategy & prioritisation

### Procurement Concierge & Supporting Services

We established a Procurement Concierge to provide guidance and assistance for DPE project managers to navigate the procurement process, established four procurement panels for professional services expected to be procured on a regular basis, engaged with industry to improve reputation and expectations for all parties, and developed procurement educational resources.



Operational improvement



# Strategy & Implementation

## Our experience



### Infrastructure NSW Major Projects Review & Recommendations



Hadron Group was engaged to complete a review of major project cost overruns. This included cost data gathering, extensive industry and project stakeholder consultation, and review of cost related information to identify root causes and recommendations to improve NSW Government infrastructure cost performance. Edward was then subsequently engaged as Executive Director in INSW to implement a range of recommendations including the whole-of-government project oversight framework, project announcement guidance, and improvements to provide portfolio insights to the Government. Edward also undertook a review of the Education CAPEX portfolio and was the Senior Responsible Officer for the INSW Assurance Portal.

Strategy & prioritisation

Program development & coordination

### Social Procurement Framework Feasibility Study & Recommendations



We analysed the current and potential supply and future demand of Western Sydney transport construction workers and businesses to understand if a social procurement framework to increase supply is needed, then identified existing services and programs that could be leveraged for a Western Sydney social procurement framework and made recommendations of new social procurement initiatives that TfNSW could lead.

Strategy & prioritisation

# Economics



Our Economics team enjoy problem solving and providing insights for clients using a range of economic techniques.

Our models project economic and financial performance using evidence-based and rigorous analysis, taking into account key drivers and risks, and provide clients with clear, actionable insights to inform strategic decision making. We have worked with all levels of government and with the private sector on transport, digital transformation, land use, water, energy, construction, and social infrastructure projects.



# Economics

## Our experience



### Bomaderry High School Final Business Case

We developed a robust Final Business Case that articulated the case for change, options considered and preferred option for investment. We also led the economic and financial appraisal which highlighted net welfare impacts and cashflow implications of the options.



Business case delivery & assurance

Economic & financial evaluation

### Aboriginal Housing and Environmental Health Strategy Business Case Development

The Regional Housing and Environmental Health Program business case put forward a holistic approach to addressing Aboriginal housing needs in the Murdi Paaki region. We developed the business case including a robust cost-benefit analysis for the program. This included a demand and supply assessment of housing in the region, demographic analysis of future tenants, and economic analysis of the different benefits resulting from more stable housing.



Business case delivery & assurance

Economic & financial evaluation

Demographic analysis

### Mooloolah River Interchange Business Case Peer Review

We evaluated the Mooloolah River Interchange business case against the Infrastructure Australia Assessment Framework, reviewing its strategic value, societal impact and deliverability. Focus areas included the integration of the project with the broader road and public transport network, the transport modelling framework, cost-benefit analysis, and comparing full and staged delivery approaches.



Peer review

### Digital Twin Economic Analysis

Hadron Group undertook rapid-cost benefit analysis of digital twin capability improvements across the City of Melbourne's services, including planning processes, waste management, parking management, and more. The analysis also considered efficiency improvements for council, the community, businesses and other economic benefits.

Subsequently, Hadron Group undertook economic and financial evaluation to support a digital twin business case delivered by the ACT Government.



Economic & financial evaluation

### Workforce and Industry Supply and Demand Analysis

We completed analysis of Western Sydney demographics, workforce, and industry for a program Strategic Business Case to understand the challenges and opportunities involved in accessing the local workforce and industry to deliver the program successfully. We also provided recommendations to leverage the investment to best provide socio-economic benefits to the local community.



Demand modelling

Demographic analysis



# Digital Solutions



Our Digital Solutions team brings together qualifications and experience in data science, network engineering, economics, and agile project management methods with proven data analytics capability.

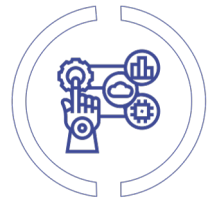
Our team excels in utilising traditional and modern techniques to manipulate data sources at scale, providing valuable insights to clients' challenges through a combination of technical expertise and industry knowledge.



HADRON  
GROUP

# Digital Solutions

## Our experience



### State Infrastructure Strategy Data Analytics Services

We provided rapid spatial data analytics support and quantitative data analysis and visualisations. This included aggregation, analysis and management of multiple spatial and non-spatial data sources across domains.

Infrastructure NSW

Analytics & insights

### Program Coordination Office Reporting Support

We were engaged by the Department of Planning and Environment to assist the Program Coordination Office in defining and automating reporting and coordination processes.

This included developing reporting and coordination tools and databases and documenting processes in a comprehensive internal process guide and multiple external facing process guides.



Analytics & insights

Process automation

Data upskilling

### Residential Data and Employment Forecast Data Collection and Automation

We defined and developed a consistent automated approach to identifying construction status from aerial imagery, using machine learning across the Greater Sydney Region. We also developed and deployed a machine learning solution that delivered significant efficiencies.

We then continued development of the model to provide more granular inputs into the broader jobs supply forecasting models. This enabled regular automated tracking of construction activity across the Greater Sydney Region.



Data wrangling

Process automation

### Regional Land Partnerships Mid-term Review

We performed a detailed data analysis and report as part of the \$450 million Regional Land Partnership Program comprising over 200 projects. To find insights from the largely qualitative data, we developed customised scripts and workflows to clean and transform each tranche of data we received into clear and meaningful insights.



Data wrangling

Analytics & insights

### State of the Regions Reporting Framework

We created a comprehensive reporting framework to enhance the understanding of wellbeing, demands, and challenges in regional New South Wales. We facilitated client workshops to identify KPIs and comprehensively documented coavailable data sources and metrics. We outlined the initial design requirements for the reporting dashboard and we devised a roadmap for implementing an automated, interactive dashboard reporting structure.



Analytics & insights

Process automation

Data strategy

# Our services



## Strategy & Implementation

### Strategy and prioritisation

- Strategy development
- Project prioritisation
- Framework development
- Feasibility studies
- Roadmap development
- Social procurement advisory

### Business case delivery and assurance

- Investment logic mapping
- Strategic alignment
- Options analysis
- Stakeholder engagement
- Project management
- Assurance and review

### Program development and coordination

- Program planning
- Stakeholder engagement
- Monitoring and evaluation
- Program reporting
- Benefits management
- Program management
- Governance and approvals

### Operational improvement

- Organisational and workforce design
- Internal process development and implementation



## Economics

### Economic and financial evaluation

- Cost-benefit analysis
- Financial appraisals
- Financial impact statements
- Distributional analysis

### Industry and impact analysis

- Financial modelling
- Economic impact assessment
- Social impact assessment

### Demand modelling

- Workforce modelling

### Demographic analysis

- Demographic analysis and insights

### Peer review and expert witness

- Assurance
- Business case evaluations
- Process review



## Digital Solutions

### Data strategy

- Data strategy
- Stakeholder engagement and communication

### Analytics and insights

- Data analysis
- Spatial analysis
- Reporting dashboards

### Process automation

- Process automation
- Reporting automation
- Machine learning

### Data wrangling

- Data collection
- Data management

### Data upskilling

- Team training
- Process documentation



# HADRON GROUP

## **All enquiries**

admin@hadrongroup.com.au  
1300 478 433

## **Sydney – Gadigal Country**

Level 3, 31 Market Street  
Sydney, NSW 2000

## **Melbourne – Wurundjeri Country**

Level 3, 162 Collins Street  
Melbourne, VIC 3000

## **Brisbane – Meanjin, Turrbal Country**

12/76 Doggett Street  
Newstead, QLD 4006

## **Perth – Walyalup, Whadjuk Nyoongar Country**

39 Cliff Street  
Fremantle, WA 6160

We respectfully acknowledge the traditional custodians of the diverse Aboriginal lands on which we operate and where our projects unfold. We pay our respects to their elders past and present, and recognize the enduring connection between Aboriginal and Torres Strait Islander peoples and their ancestral territories. As we work on these lands, we strive to uphold the principles of respect, cooperation, and environmental stewardship, guided by a shared commitment to a harmonious future.

hadrongroup.com.au

Strategy & Implementation | Data Solutions | Economics